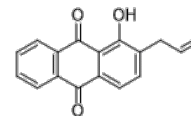


Product Name : R162
Cat. No. : PC-23555
CAS No. : 64302-87-0
Molecular Formula : C₁₇H₁₂O₃
Molecular Weight : 264.28
Target : Other Targets
Solubility : 10 mM in DMSO



Biological Activity

R162 is a potent, specific inhibitor of glutamate dehydrogenase 1 (GDH1/GLUD1) with K_i of 28.6 μ M, inhibits cancer cell proliferation and tumor growth.

R162 treatment results in decreased intracellular fumarate levels, attenuated GPx activity, increased ROS levels, and reduced cell proliferation in H1299 and MDA-MB231 cells.

R162 shows promising anti-proliferative potential in cancer cells with minimal toxicity in vitro and in vivo.

References

Jin L, et al. Cancer Cell. 2015 Feb 9;27(2):257-70.

Jin L, et al. Mol Cell. 2018 Jan 4;69(1):87-99.e7.

Caution: Product has not been fully validated for medical applications. Lab Use Only!

E-mail: tech@probechem.com